

HELLO SEATS!

materialised

WRITER'S BLOCK ESSENTIALS - NEUTRALS

FAUX LEATHER



Wilde
Shimmer



Gibbs
Pearl



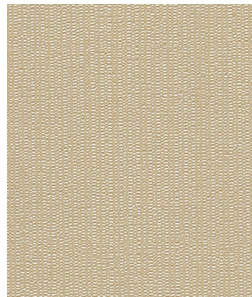
Lawson
Ash



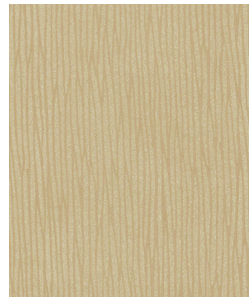
Wilde
Tinsel



Lawson
Brulee



Gordon
Latte



Gibbs
Chardonnay



Wilde
Chandelier



Lawson
Mocha



Lawson
Grout



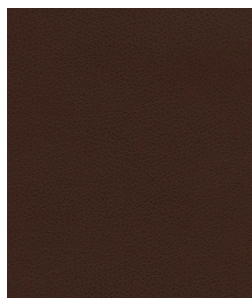
Gibbs
Taupe



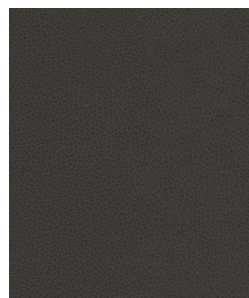
Lawson
Earth



Gibbs
Mocha



Lawson
Barrel



Lawson
Stone



Gordon
Brown

WRITER'S BLOCK ESSENTIALS - NEUTRALS

FAUX LEATHER

Name	Gibbs	Gordon	Lawson	Wilde
Usage: Bedhead & Upholstery	✓	✓	✓	✓
Width	137cm	137cm	137cm	137cm
Pattern Repeat	N/A	N/A	N/A	N/A
Composition	Surface 100% Polyurethane / Backing 100% Polyester Knit	Surface 100% Polyurethane / Backing 100% Polyester Knit	Surface 100% Polyurethane / Backing 100% Polyester Knit	Surface 100% Polyurethane / Backing 75% Polyester 25% Cotton
Flammability	AS/NZ 1530 pt 3 IMO 2010 FTP Code Annex 1 Part 8	AS/NZ 1530 pt 3 IMO 2010 FTP Code Annex 1 Part 8	AS/NZ 1530 pt 3 IMO 2010 FTP Code Annex 1 Part 8	AS/NZ 1530 pt 3 Cal 117, NFPA 260, ASTM E84
Abrasion; Double Rubs Wyzenbeek	250,000	250,000	250,000	165,000
Ink Resistant Technology	✓	✓	✓	✓
Colours Available	12	9	16	13
Fabric Care	Mat 9	Mat 9	Mat 9	Mat 9

For further information on care codes and maintenance please visit the links below.

materialised.com/products/gibbs

materialised.com/products/gordon

materialised.com/products/lawson

materialised.com.au/product/wilde

materialised.com.au/resources/cleaning-and-care/upholstery-maintenance/fabric-care-cleaning-maintenance-videos/